



1 June - 10 June 2026

Online via Zoom | For age 8-16 yrs

SUPPLY LIST

Welcome to All India Navankur Sulekhan Summer Camp 2026!

This camp is an exciting opportunity for students aged 8 to 16 years to explore the beautiful world of calligraphy, lettering and craft. Through a variety of workshops, participants will get hands-on experience with different techniques, learning to create beautiful letterforms while engaging their minds and senses. Whether you are a beginner or have some experience, our camp offers a fun and meaningful way to dive into the art of writing, discover new skills, and grow in confidence.

Join us for a journey of creativity and discovery!

SCHEDULE

Date & Day	Letter Lab (11:00 AM to 12:00 PM)	Creative Studio (1:00 PM to 2:00 PM)
1 Jun (Mon)	Opening Ceremony	Smart Study Posters
2 Jun (Tue)	The DNA of Letters	Bulletin Board Magic
3 Jun (Wed)	Stroke Stories	Headline Hacks
4 Jun (Thu)	Rhythm & Flow Lab	Scrapbook Stories
5 Jun (Fri)	Alphabet Remix Studio	Tear & Texture Art
6 Jun (Sat)	Serif vs Sans Playground	From Waste to Wow
7 Jun (Sun)	Bubble & Cloud Letters	Mini Card Studio
8 Jun (Mon)	Doodle Meets Letters	Mandala for Focus
9 Jun (Tue)	Invent Your Font	Creative Journal Page
10 Jun (Wed)	Signature Poster Project	Closing Ceremony

What is this document?

This document contains a detailed list of supplies required for each session of the summer camp. To ensure you get the most out of every session, we encourage you to gather your supplies in advance. Having everything ready will allow you to actively participate and follow along with the instructor as they guide you through each exciting activity.

Please note that the supply list is organised according to the sessions. As there are two segments available (Letter Lab and Creative Studio), make sure to check which segment you have enrolled for and arrange your supplies accordingly.

Important Reminder:

While the supply list includes recommended items for each session, it is not necessary to have everything on the list. Feel free to use the materials you already have at home, and don't worry if you're missing something. Creativity is the key!

We hope you're excited for the camp, and we can't wait to see you there!



DAY 1 - 1 JUNE

LETTER LAB
11:00 AM - 12:00 PM

Orientation Session

- Pencil
- Pen/ pencil
- Notepad

CREATIVE STUDIO
1:00 PM - 2:00 PM

Smart Study Poster

- White chart paper (A4 size)
- Pencil
- Eraser
- Scale/ruler
- Black sketch pen
- Crayons or oil pastels
- Glitter pens (optional)
- Stickers or stars (optional)

DAY 2 - 2 JUNE

LETTER LAB
11:00 AM - 12:00 PM

The DNA of Letters

- A4 paper
- Pencil
- Eraser
- Pen
- Ruler
- Protractor

CREATIVE STUDIO
1:00 PM - 2:00 PM

Bulletin Board Magic

- Watercolour paper
- Pencil
- Scale
- Eraser
- Watercolours (student grade camlin)
- Round brushes (2,4,6)
- Colourful fineliner Pens (optional)

DAY 3 - 3 JUNE

LETTER LAB
11:00 AM - 12:00 PM

Stroke Stories

- Paper
- Pencil
- Pen
- Eraser
- Ruler

CREATIVE STUDIO
1:00 PM - 2:00 PM

Headline Hacks

- Drawing book/ white paper
- Pencil
- Eraser
- Sharpener
- Black pen
- Sketch pens
- Pencil colors/ crayons
- Brush pens/ color pens (optional)

DAY 4 - 4 JUNE

LETTER LAB
11:00 AM - 12:00 PM

Rhythm & Flow Lab

- White paper/ Ruled paper
- Pencil
- Eraser
- Scale/ruler
- Black sketch pen

CREATIVE STUDIO
1:00 PM - 2:00 PM

Creative Journal Page

- Plain sheets or notebook/journal page
- Pencil and eraser
- Black pen
- Colours/sketch pens/ crayons
- Washi tape/ stickers/ old paper cuttings (optional)



DAY 5 - 5 JUNE

LETTER LAB
11:00 AM - 12:00 PM

Alphabet Remix Studio

- White sheets / sketchbook
- Pencil
- Eraser
- Black marker/sketch pen
- Crayons / sketch pens / color pencils

CREATIVE STUDIO
1:00 PM - 2:00 PM

Tear & Texture Art

- Base sheet or A4 sheet
- Old newspapers/
magazines/ coloured paper
- Glue stick or liquid glue

DAY 6 - 6 JUNE

LETTER LAB
11:00 AM - 12:00 PM

Invent Your Font

- White paper (A4 size)
- Pencil
- Eraser
- Scale/ruler
- Black sketch pen
- Crayons or oil pastels
- Highlighters (optional)
- Graph paper (optional)
- Stickers (optional)

CREATIVE STUDIO
1:00 PM - 2:00 PM

From Waste to Wow

- Canvas or MDF or hard cardboard
round shape (preferably size 6 inches)
- Pencil and eraser
- Compass
- Scissors
- Tissue papers
- Water in a bowl
- Acrylic colours
- Fevicol
- Wet tissues
- Tweezers (optional)

DAY 7 - 7 JUNE

LETTER LAB
11:00 AM - 12:00 PM

Cloudy Letters

- Pencil
- Scale
- Colour (any type of colour)
- Colour pen
- White colour pen(optional)
- Eraser

CREATIVE STUDIO
1:00 PM - 2:00 PM

Mini Card Studio

- 200 – 250 GSM Paper
- Pencil
- Scales
- Brush pens
- Colours
- Glitter
- Scissors
- Glues
- Cutout of pictures, flowers

DAY 8 - 8 JUNE

LETTER LAB
11:00 AM - 12:00 PM

Doodle Meets Letters

- Pencil
- Eraser
- Sharpener
- Scale
- Sketch Pens
- Black outline pen (micron)
- Colour Pencils
- 140 gsm papers size A5 (2-3)

CREATIVE STUDIO
1:00 PM - 2:00 PM

Mandala For Focus

- A4 white sheets
- Pencil
- Eraser
- Ruler
- Compass or small circular objects like bowls, plates, or lids
- Black Marker or Sketch pen
- Fineliners (optional) -0.5, 0.8
- Crayons, colour pencils
- Glitter pens or markers

DAY 9 - 9 JUNE

LETTER LAB
11:00 AM - 12:00 PM

Serif vs Sans Playground

- Paper
- Black sketch pen

CREATIVE STUDIO
1:00 PM - 2:00 PM

Scrapbook Stories

- Colored chart paper or cardstock
- A4 white sheets
- Old magazines/ newspapers for cutouts
- Brown paper bags or kraft paper
- Glue stick/ White glue
- Crayons/ Sketch pens/ Color pencils
- Stickers
- Washi tape or decorative tape
- Ribbon scraps

DAY 10 - 10 JUNE

LETTER LAB
11:00 AM - 12:00 PM

Signature Poster Project

- A4 chart sheet
- Pencil
- Eraser
- Sharpener
- 30 cm scale
- Doms brush pen set
- Thin black marker
- 0.5 black ball pen
- Transparent sheet
- White gel pen or any white paint
- Water in spray bottle

CREATIVE STUDIO
1:00 PM - 2:00 PM

Closing Session

- All completed projects

CUMULATIVE SUPPLY LIST

Basic Stationery

- Notepad
- Pencil
- Black gel pen/ ball pen
- Black sketch pen
- Eraser
- Sharpener
- Ruler/scale
- Protractor
- Compass
- Glue stick/ white glue/ Fevicol
- Scissors

Colors

- Crayons/oil pastels/colour pencils
- Colours/watercolours / acrylic colours
- Watercolour (Camlin - student grade)
- Glitter pens
- Highlighters
- Brush pens/ sketch pens/ colour pens
- Fineliners
- White gel pen/ white colour pen/ white paint

Writing Surface/ Paper

- White paper (A4 size)
- Journal pages
- Watercolour paper (140–250 GSM paper)
- Transparent sheet
- Canvas or MDF board (size 6 inches)
- Old newspapers/ magazines/ coloured paper
- Brown paper bags/ kraft paper

Decorative Material

- Cutouts of pictures / flowers
- Ribbon scraps
- Washi tape / decorative tape
- Stickers / stars

Please Note:

This master list combines supplies from all 18 sessions for easy reference. For individual sessions, refer to that particular day.

Most supplies are simple and easily available. And if you do not have a particular material, that is completely okay. Feel free to use the materials you already have at home. What matters most is your showing up and enjoying the process.

You're all set to create!

Thank you for preparing yourself with the right tools—you're already one step ahead in your creative journey!

Remember, it's not about having the fanciest supplies, but about showing up with heart, imagination, and a willingness to try.

Be kind to your hands, patient with your progress, and proud of your effort. We can't wait to see what you create!

Let the magic of making begin!

STAY CONNECTED

To stay connected and get your work featured, tag below Instagram handles

- @navanakursulekhan and
- @thecalligraphyfoundation

For Summer Camp related queries

Website:

<https://thecalligraphyfoundation.com/navankur-sulekhan-summer-camp-2025>

Contact No.:

Ekta Chahar: +91 8275777318 (Drop a message with your query)

Email Address:

navankursulekhan@gmail.com

thecalligraphyfoundation@gmail.com

For any inquiries, please feel free to reach out to us via any of the contact methods above. We look forward to connecting with you!

DAY 1

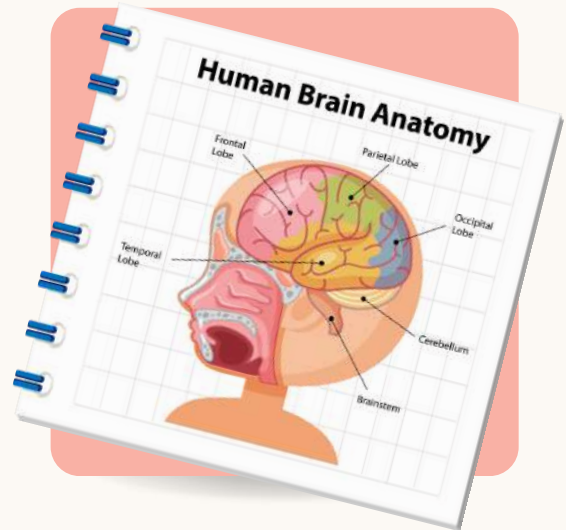
11:00 AM - 12:00 PM



Opening Session

- Notepad
- Pen/ pencil

1:00 PM - 2:00 PM



Smart Study Poster

- White chart paper (A4 size)
- Pencil
- Eraser
- Scale/ruler
- Black sketch pen
- Crayons or oil pastels
- Glitter pens (optional)
- Stickers or stars (optional)

Day 2

11:00 AM - 12:00 PM

1:00 PM - 2:00 PM



The DNA of Letters

-

Bulletin Board Magic

- Watercolours (student grade camlin)
- Watercolour paper
- Round brushes (2,4,6)
- Pencil, scale, eraser
- Colourful fineliner Pens (optional)

DAY 3

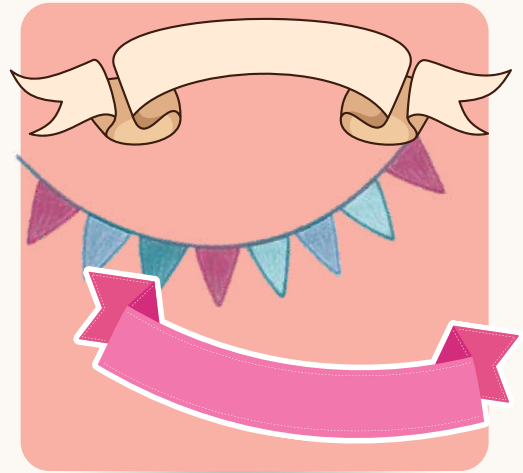
11:00 AM - 12:00 PM



Stroke Stories

-

1:00 PM - 2:00 PM



Headline Hacks

- Drawing book or drawing sheets or any notebook
- Black pen
- Sketch pens
- Pencil, eraser, sharpener
- Brush pens(if have)
- Pencil colors/ crayons
- Color pen(if have)

DAY 4

11:00 AM - 12:00 PM



Rhythm & Flow Lab

-

1:00 PM - 2:00 PM



Scrapbook Stories

- Colored chart paper or cardstock
- A4 white sheets
- Old magazines/ newspapers for cutouts
- Brown paper bags or kraft paper (for a rustic scrapbook look)
- Glue stick/ White glue
- Crayons/ Sketch pens/ Color pencils
- Stickers
- Washi tape or decorative tape
- Ribbon scraps

DAY 5

11:00 AM - 12:00 PM



Alphabet Remix Studio

- White sheets / sketchbook
- Pencil
- Eraser
- Black marker/sketch pen
- Crayons / sketch pens / color pencils

1:00 PM - 2:00 PM



Tear & Texture Art

-

DAY 6

11:00 AM - 12:00 PM



1:00 PM - 2:00 PM



Serif vs Sans Playground

- Black Sketch Pen
- Paper

From Waste to Wow

- 1. Canvas or MDF board (preferably size 6 inches by 6 Inches)
- 2. Tissue paper
- 3. Acrylic colour
- 4. Fevicol
- 5. Pencil and eraser
- 6. Tweezers (optional)
- 7. Keep wet tissues handy to wipe your hands

DAY 7

11:00 AM - 12:00 PM



1:00 PM - 2:00 PM



Bubble & Cloud Letters

- Pencil
- Eraser
- Scale
- Colour (any type of colour)
- Colour pen
- White colour pen (optional)

Mini Card Studio

- BASE: 200 – 250 GSM Paper/ Sheet (OR) Handmade Paper.
- TOOLS: Pencil, brush pens, colours, glitter.
- Scissors, Glues, scales.
- Cutout of pictures, flowers etc,

DAY 8

11:00 AM - 12:00 PM



Doodle Meets Letters

- Pencil
- Eraser
- Sharpener
- Scale
- Sketch Pens
- Black outline pen (micron)
- Colour Pencils
- 140 gsm papers size A5 (2-3)

1:00 PM - 2:00 PM



Mandala for Focus

-

DAY 9

11:00 AM - 12:00 PM



Invent Your Font

- White paper (A4 size)
- Pencil
- Eraser
- Scale/ruler
- Black sketch pen
- Crayons or oil pastels
- Highlighters (optional)
- Graph paper (optional)
- Stickers (optional)

1:00 PM - 2:00 PM



Creative Journal Page

-

DAY 10

11:00 AM - 12:00 PM



1:00 PM - 2:00 PM



Signature Poster Project

- 1 A4 chart sheet
- 1 daily use pencil, eraser, sharpener
- Doms brush pen set
- One thin black marker
- 1 - 0.5 ball pen black
- 1 - 30 cm scale
- One transparent sheet
- White gel pen or any white paint
- Water in spray bottle

Closing Session

- All completed creations



a summer of letters, art and expression